

# LE PERLE

a Residence by Implenla



Un progetto sviluppato da Implenla.

**B1** PT / EG

**3,5 LOCALI / ZIMMER**

**SUPERFICI / FLÄCHEN**

SUPERFICIE ABITABILE / WOHNFLÄCHE

91,7 m<sup>2</sup>

SUPERFICIE UTILE / NUTZFLÄCHE

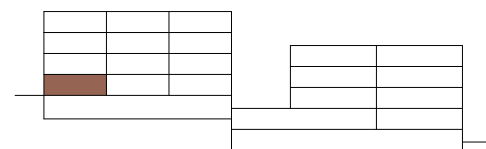
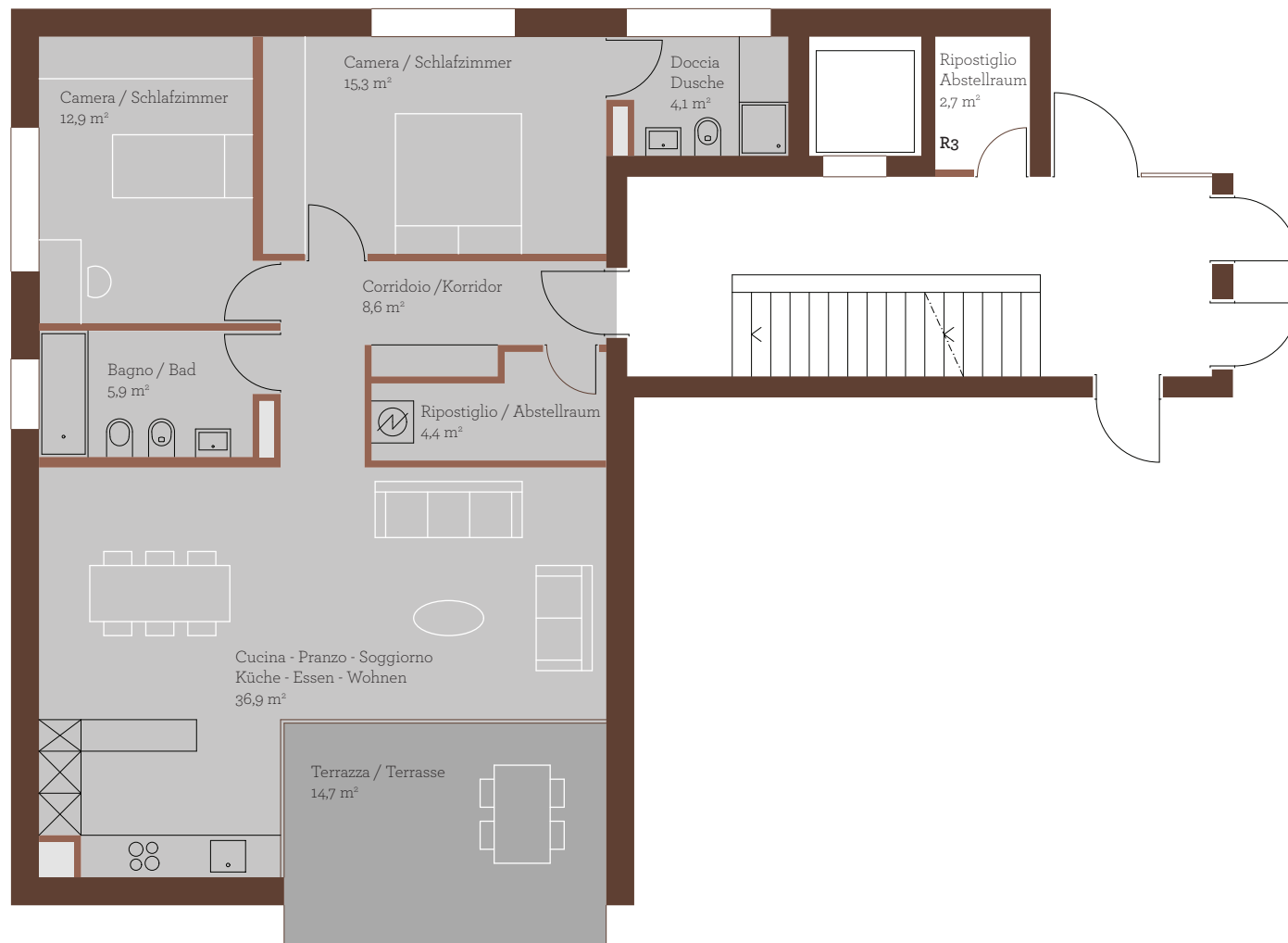
88,1 m<sup>2</sup>

TERRAZZA / TERRASSE

14,7 m<sup>2</sup>

GIARDINO / GARTEN

ca. 300 m<sup>2</sup>



Giardino / Garten  
ca. 300 m<sup>2</sup>



1:100

